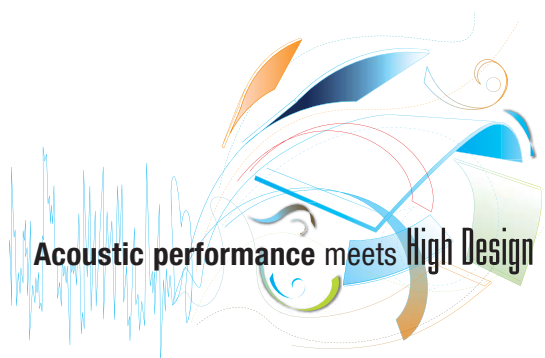




ULTIMA CANOPY





accentuate

Ultima Canopy is a mineral panel, pre-formed into a convex or concave shape. The curved shape enables you to accentuate an area and express your creativity.

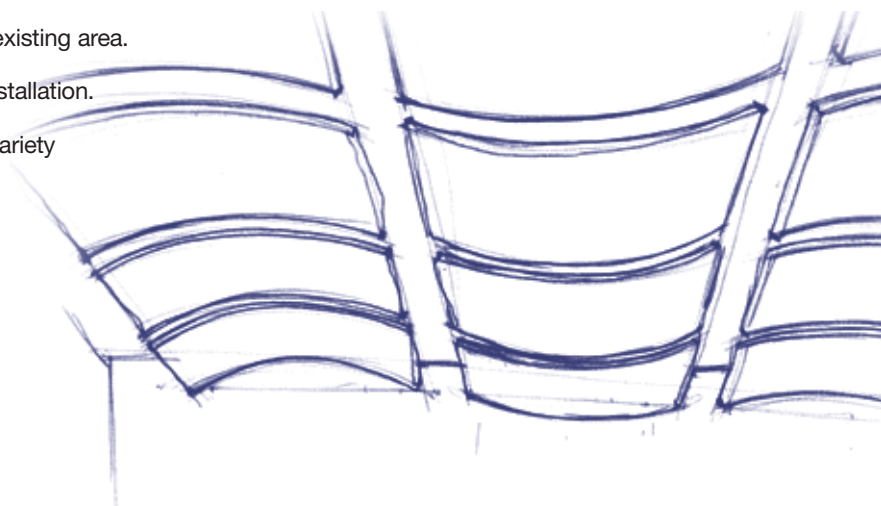
Ultima Canopy is the best creative design solution for open areas, offering excellent sound absorption and light reflectance. Ultima Canopy improves the overall comfort of an individual's working environment.

Ultima Canopies provide a bespoke finish and are very quick and easy to install.

Ultima Canopies can be used to renovate an existing area.

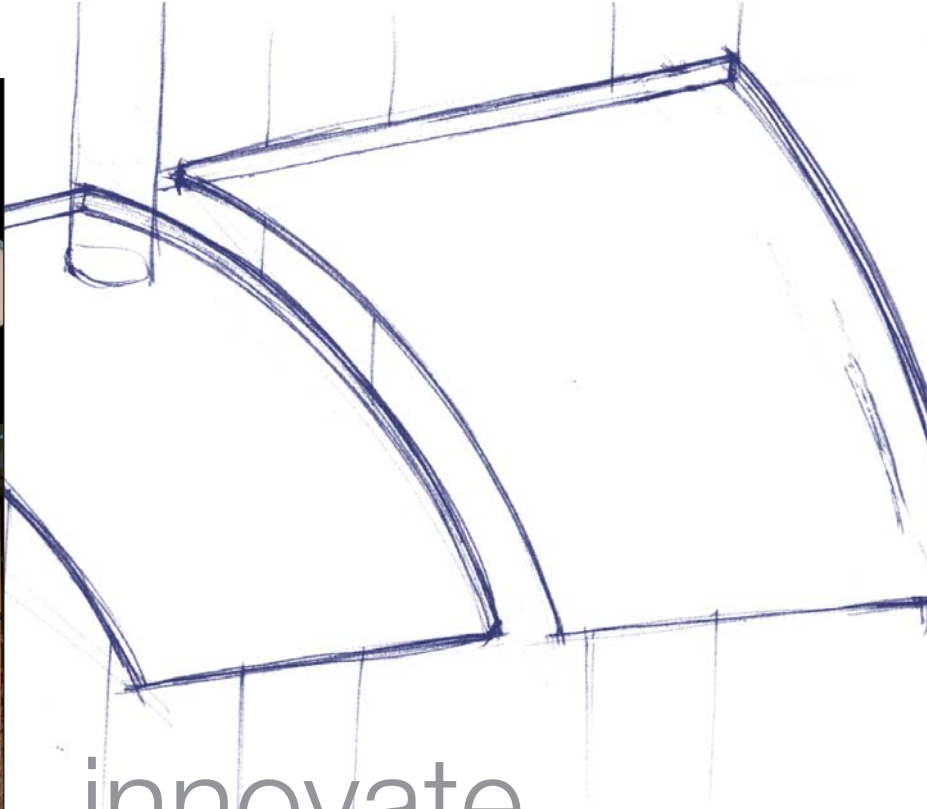
In addition, no special tools are required for installation.

You can easily adjust and fit the canopy to a variety of heights and angles.





meeting areas



innovate



conference rooms

Open areas

Lobbies

Hospital & Retail

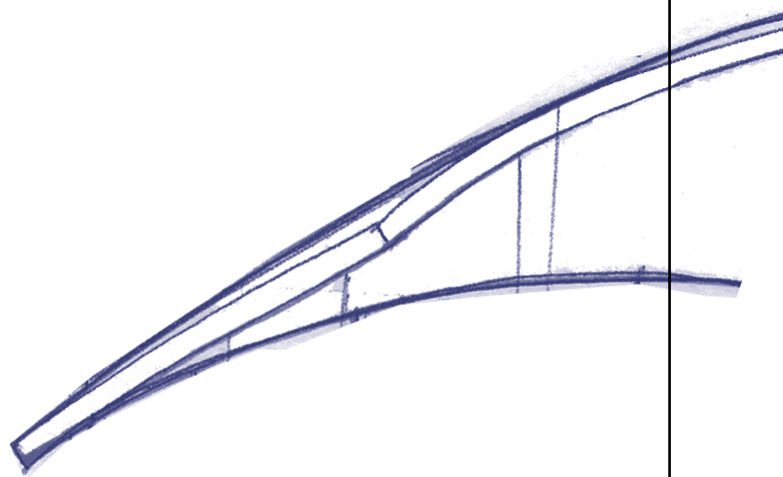
Exhibitions . . .



circulations

create

- Ultima Canopy is available in both concave and convex shapes. Enables you to create various design options.
- Suspension system: An embedded fixing plate allows easy fixing to the back of the canopy for quick installation.
- Exclusive finish with high light reflectance (86%).
- The durable Ultima finish allows the use of a clean, dry, soft white cloth to wipe off any dirt or fingerprints.
- The suspension system is flexible and allows the panel to 'swing down', making it easier for cleaning and maintenance.



shape



enhance acoustics

Ultima Canopy offers excellent sound absorption for both open spaces and individual working areas.

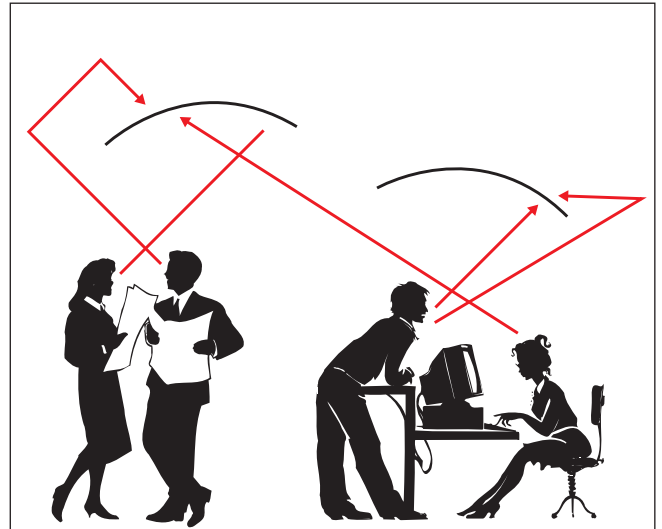
Each 2.2 m² canopy provides nearly 3 Sabines (m²) of sound absorption at 1kHz (EN ISO 354).

Which means that one canopy will absorb over 50% more sound than a traditional wall to wall Ultima ceiling.

By providing sound absorption, Ultima Canopies help to:

- Reduce reverberation time
- Reduce noise level
- Increase speech intelligibility

Panels also act as partial sound reflectors in a space.



Physical Data

Dimensions	1905 x 1180 x 32 mm
Colour	White
Edge	Paint on edges
Edge detail	Board
Fire reaction	A2, s1- d0 (EN 13964:2004)
Humidity resistance (% RH)	70
Light reflectance (%)	86
Scratch resistance	Yes
Thermal conductivity (W/m°C)	0.052-0.057 W/mK
Recycled content	≤ 70%
Sound absorption – Sabine m²	2.84 (1 kHz)
Weight	Panel = 23 kg
Cleaning	Use a clean, dry, soft white cloth to wipe off any dirt or fingerprints. Regular light dusting of the back side of the canopy is recommended.



Recommendation



- Attach the gripper structure anchor with a suitable fastener in accordance with EN13964.
- Use the suspension cable template on the top of the carton to identify the cable anchor points on the structure.
- Canopies cannot be drilled, cut or altered in any way.
- Ultima Canopies are not recommended for external use.
- All cable attachments should be made while the product is in the carton.
- The Canopy (23 kg) should always be suspended by 2 people.
- After opening the carton, remove and set aside the accessory kit before proceeding.
- Do not remove the Canopy from the carton until the Canopy is suspended.
- Canopy suspension cables should not impose any additional load or lateral force on an existing ceiling.
- Do not allow excess cable to drop below the canopy when adjusting the panel to the required height. This could cause injury or panel edge damage.

Please contact
Internal Technical Sales
for further details.

United Kingdom / Republic of Ireland

Armstrong World Industries Ltd.
Building Products Division
Armstrong House, 38 Market Square,
Uxbridge UB8 1NG

www.armstrong-ceilings.co.uk
sales-support@armstrong.com

0800 371849 (UK) **FREEPHONE**
1800 409002 (ROI)
Fax: 00 44 (0) 1895 274287

Other countries:

www.armstrong-europe.com

Central Europe

(+48) 22 337 86 10/11

Greece

(+39) 02 66 22 76 50

Scandinavia

(+31) 76 521 77 33

Africa / Middle East / Turkey

(+44) 01895 251 122



Concave



Convex

Item number

1 piece per carton	BP62591G	BP62581G
2 pieces per carton	BP62592G	BP62582G

Extended Hanging Cables

BP625530

(4) 9.15 metre cables

Escutcheon Kit

BP70056

Used when hanging canopy below an existing ceiling.
(2) Collars with Set Screws
(2) 50 mm Escutcheons

Note: 2 kits are required for each Canopy

